



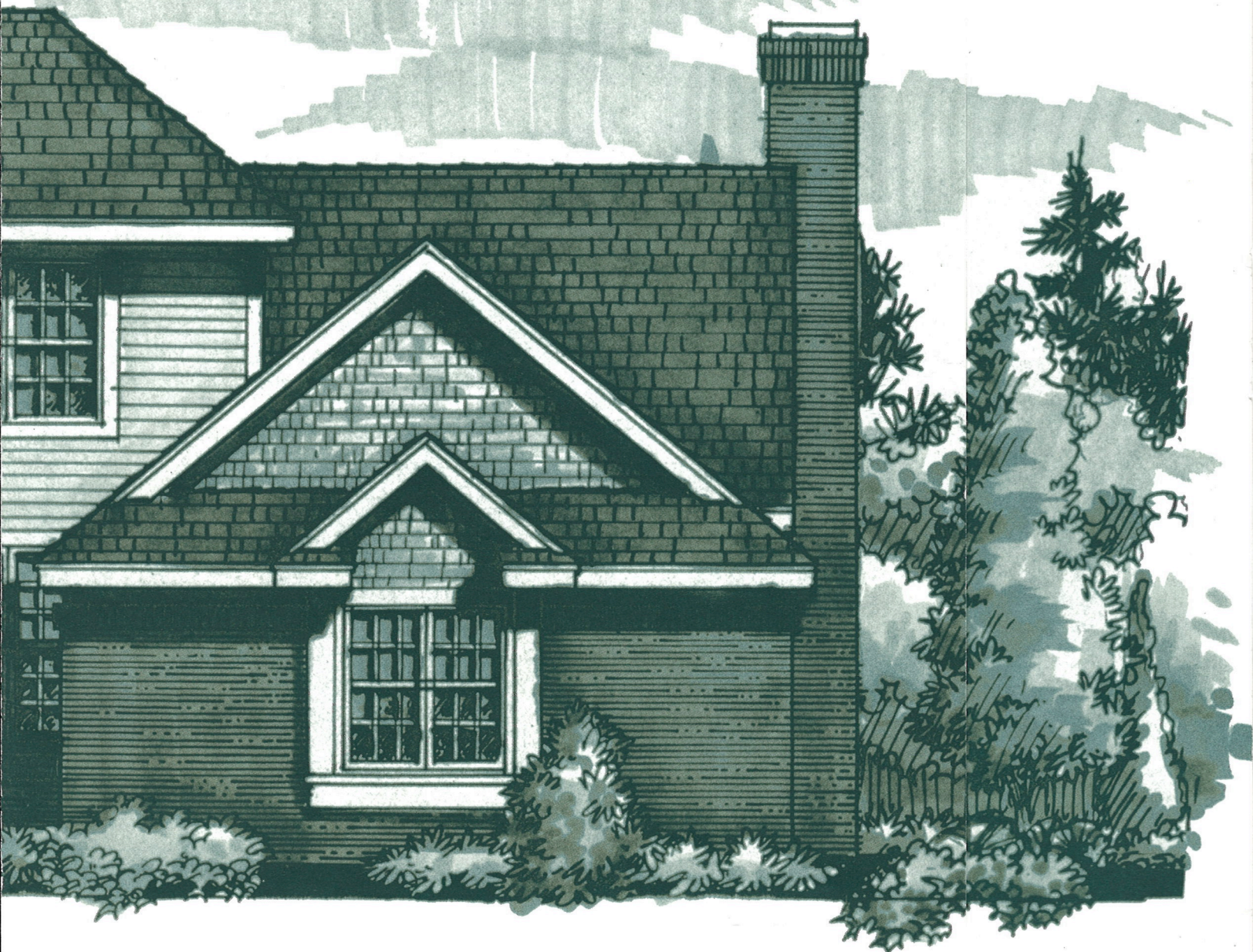
RIVERWALK COMMONS

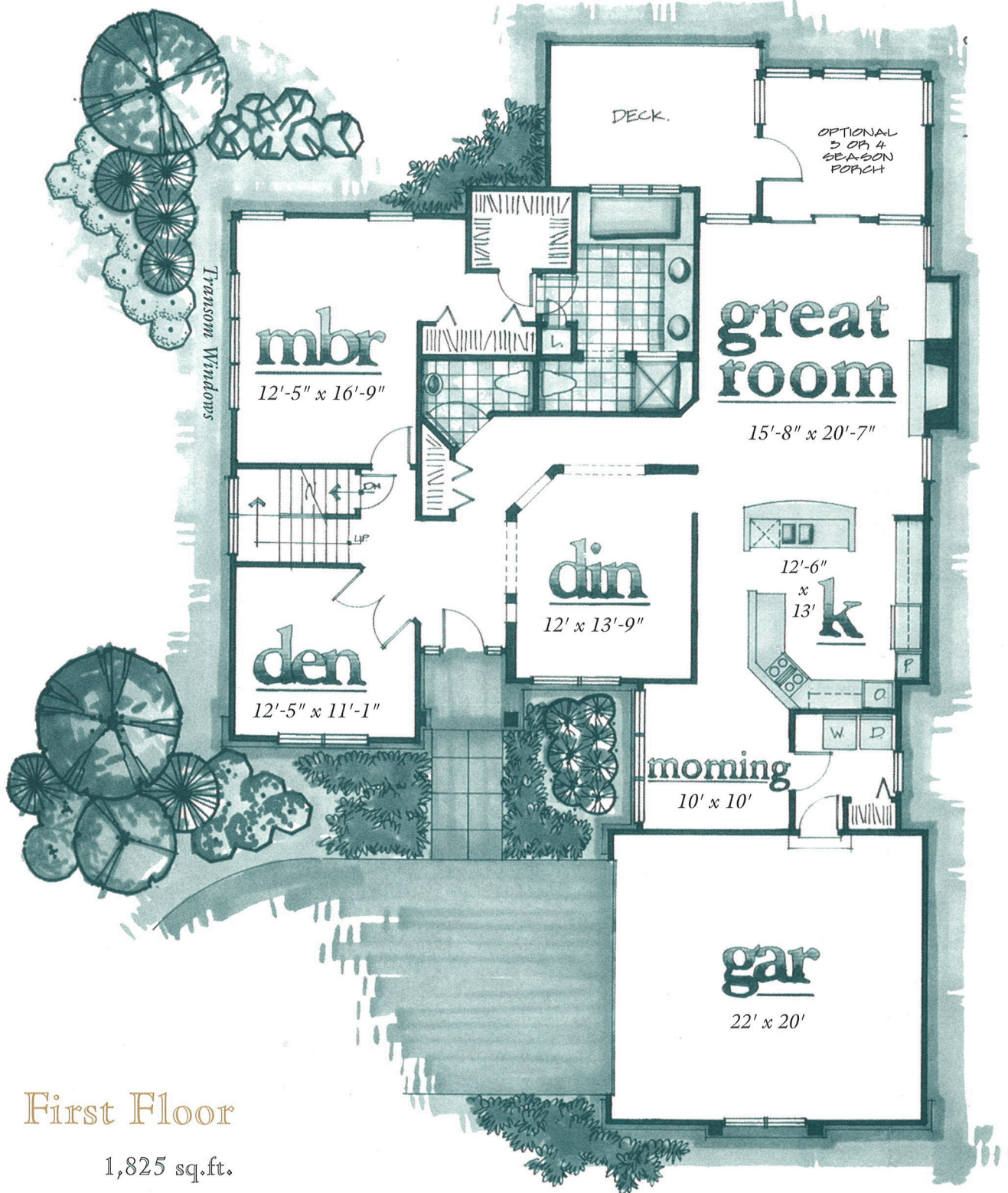
*A village community on Bird Pond*

WELCOME HOME

THE KINGFISHER

2,610 sq. ft.





First Floor

1,825 sq.ft.

The dimensions, size, configurations and other information contained on this sheet are subject to change without notice and are meant to be illustrative only. Optional features may be shown.



Se

The

- 2 b
- 2 l
- 2-c
- Fro
- she
- Di
- arc
- Co
- wit

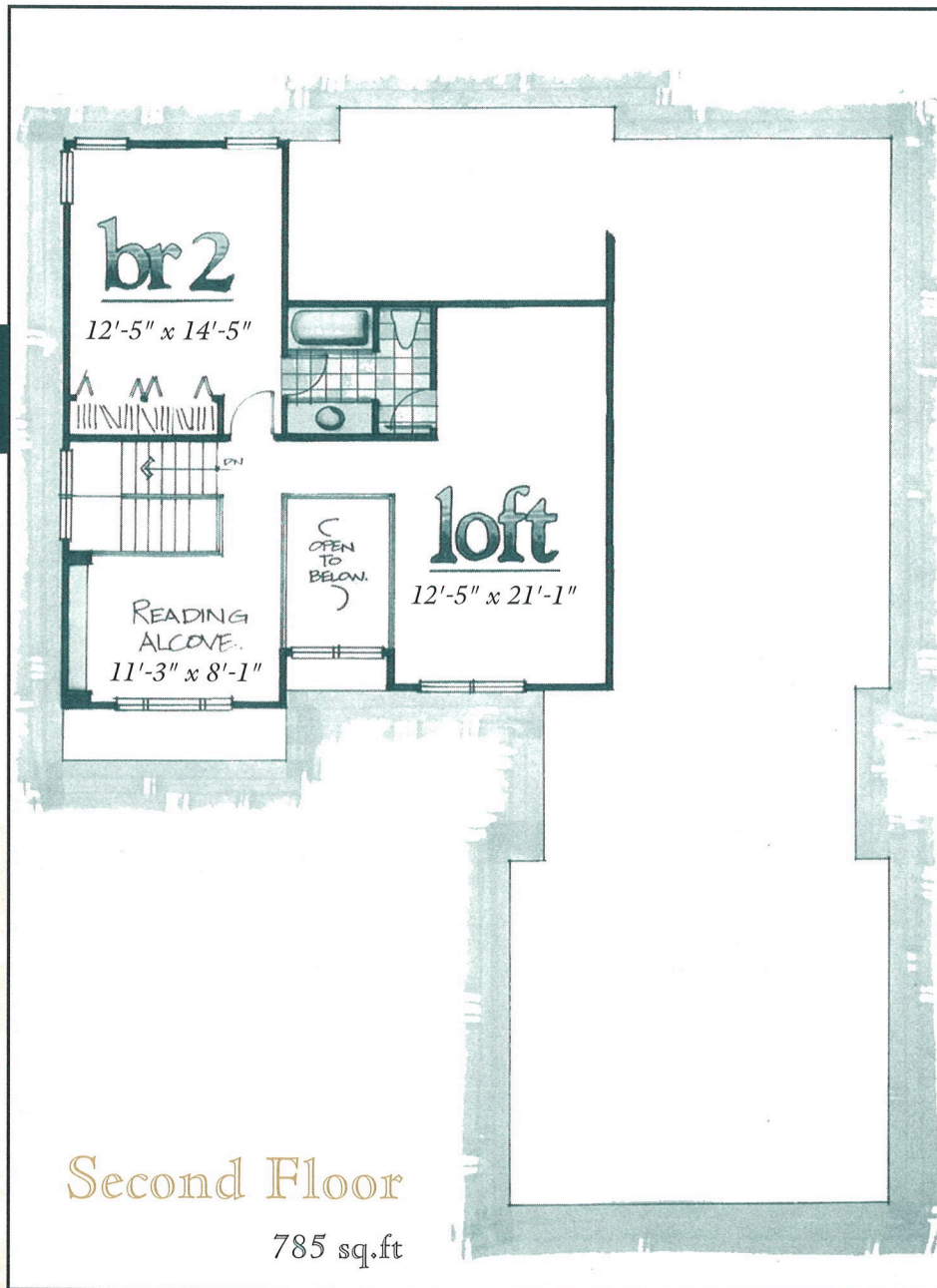


## First Floor

1,825 sq.ft.

The dimensions, size, configurations and other information contained on this sheet are subject to change without notice and are meant to be illustrative only. Optional features may be shown.

# Grossman Lot 2



## The Kingfisher features:

- 2 bedrooms
- 2 1/2 baths
- 2-car garage
- Front courtyard sheltered front porch
- Dining room with architectural columns
- Corner great room with cathedral ceiling
- Kitchen with adjoining morning/breakfast room
- Gas-fired fireplace
- Loft with reading alcove



RIVERWALK COMMONS

*A village community on Bird Pond*



*Marketed exclusively by*



RIVERWALK COMMONS • 8 Rose Court Way • East Walpole, MA 02032 • (508) 660-9565

