



148 PLAIN DRIVE

STOUGHTON, MA
02072



3 BDRM | 2 FULL & 2 HALF BATHS | 3,376 SQ. FT. | .46 ACRES



MIKE MAHONEY

Realtor®

617.615.9435

MIKE@MMAHONEY.COM

REALTORMIKEMAHONEY.COM



Century 21 American Properties



148 PLAIN DRIVE

WELCOME TO STOUGHTON

This colonial style home is located on the Bay Road side of Stoughton at the end of a circular street. Spend quality time in the large kitchen with super functional layout and a sunny eating area overlooking the yard. A dining room and a fireplaced living room round off the first floor. Three bedrooms on second floor including a master bath and walk-in closet. Level backyard is ready for fire pits, futbol pitches or even playgrounds! If you're an entertainer, this spacious place is for you. Host your family reunion here and not even reach max capacity.

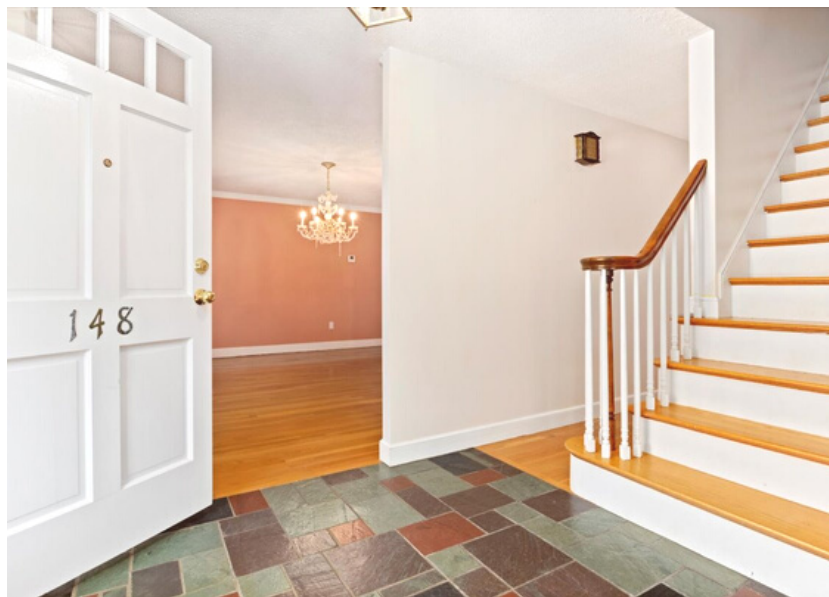
The lower level has more space ready to go. LL features plenty of home office or recreational space solutions. See more on the web site @ www.148PlainDrive.info

Looking to trade in your house? Check out www.YourEquityFinder.com



HOME HIGHLIGHTS:

- ✓ Hardwood flooring
- ✓ Bright and open kitchen
- ✓ Sunny eating area
- ✓ Dining room
- ✓ Spacious fireplaced living room
- ✓ Three bedrooms
- ✓ Master bath and walk- in closet
- ✓ 2 car attached garage
- ✓ Large level back yard
- ✓ Close proximity to Cobbs Corner shopping center
- ✓ Short drive to commuter rail station





MIKE MAHONEY

Realtor®

617.615.9435

MIKE@MMAHONEY.COM

REALTORMIKEMAHONEY.COM



Century 21 American Properties